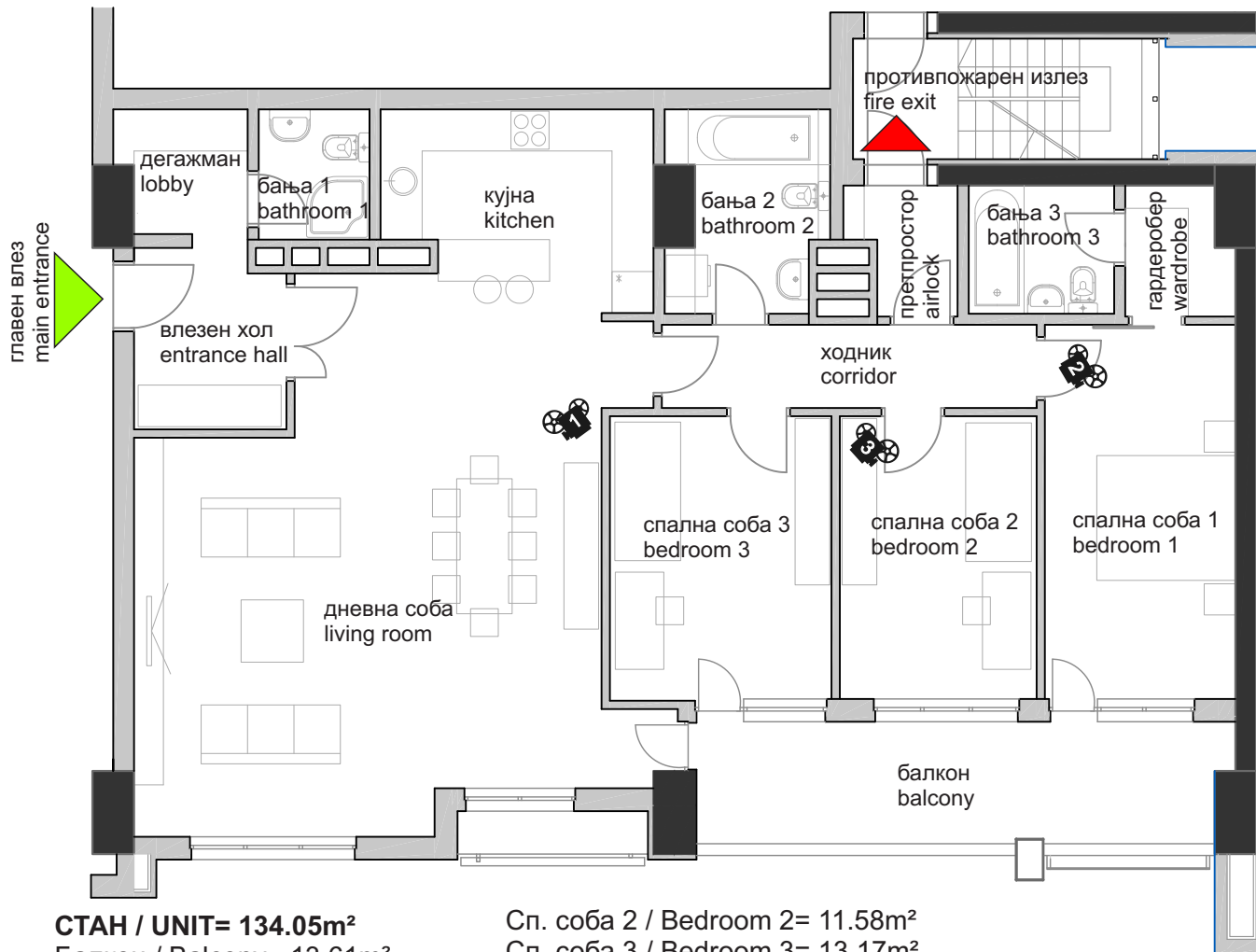


SKOPJE CITY TOWER ГРУПНО ДОМУВАЊЕ / RESIDENTIAL UNITS

СТАН 1 / UNIT 1
Кат 1 / Floor 1

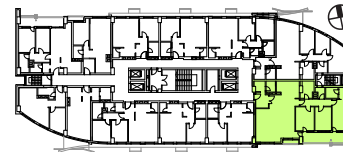
ОСНОВА
FLOOR LAYOUT

3Д ВИЗУЕЛИЗАЦИЈА
3D VISUALIZATION

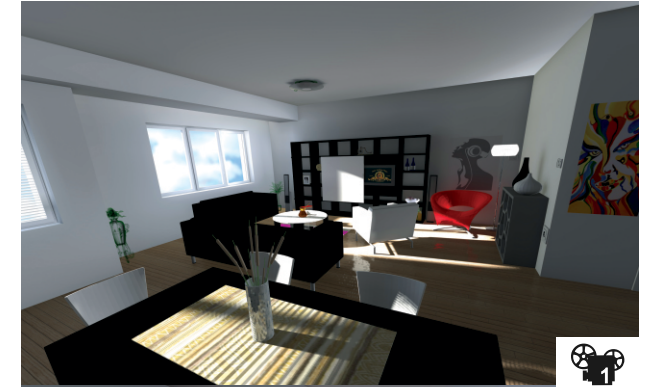


СТАН / UNIT= 134.05m²
 Балкон / Balcony= 13.61m²
 Влезен хол / Entrance hall= 5.99m²
 Дегажман / Lobby= 3.46m²
 Ходник / Corridor= 6.99m²
 Кујна / Kitchen= 9.61m²
 Дн.соба / Living room= 49.70m²
 Сп.соба / Bedroom= 14.93m²

Сп. соба 2 / Bedroom 2= 11.58m²
 Сп. соба 3 / Bedroom 3= 13.17m²
 Бања 1 / Bathroom 1= 3.00m²
 Бања 2 / Bathroom 2= 6.24m²
 Бања 3 / Bathroom 3= 3.88m²
 Гардеробер / Wardrobe= 2.93m²
 Претпростор / Airlock= 2.57m²



основа на карактеристичен кат
typical floor layout

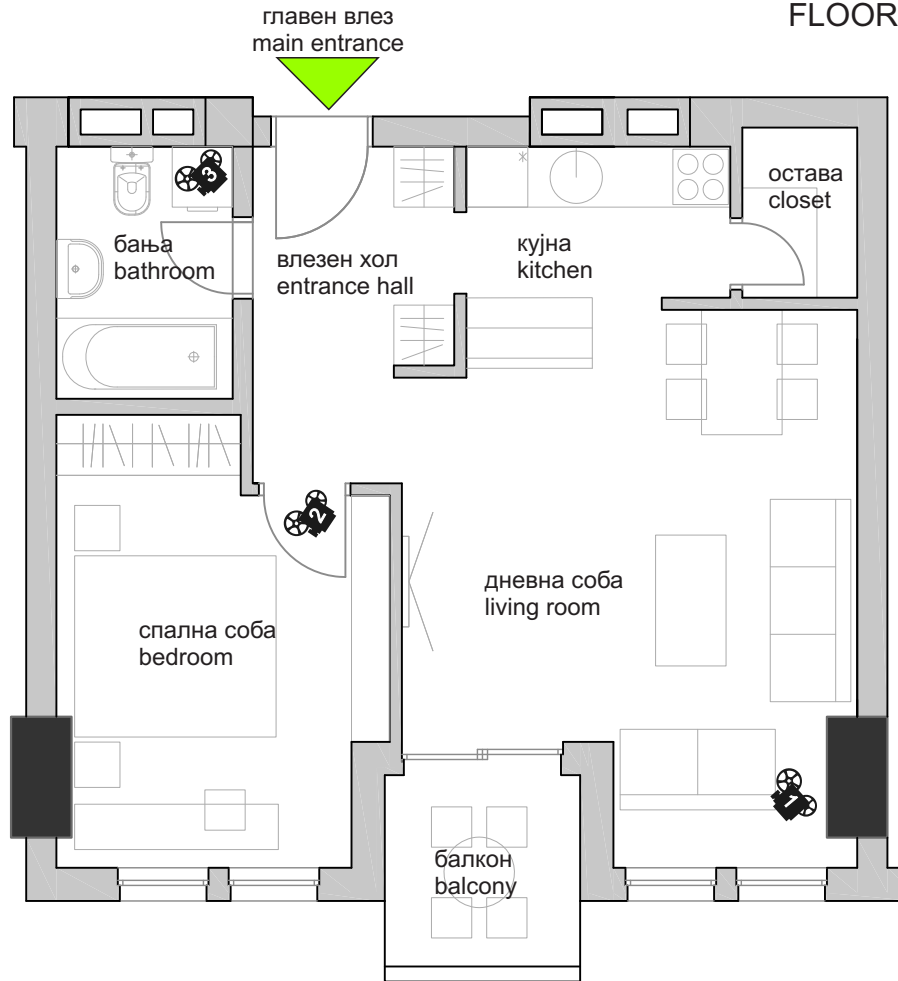


SKOPJE CITY TOWER ГРУПНО ДОМУВАЊЕ / RESIDENTIAL UNITS

СТАН 2 / UNIT 2
Кат 1 / Floor 1

ОСНОВА
FLOOR LAYOUT

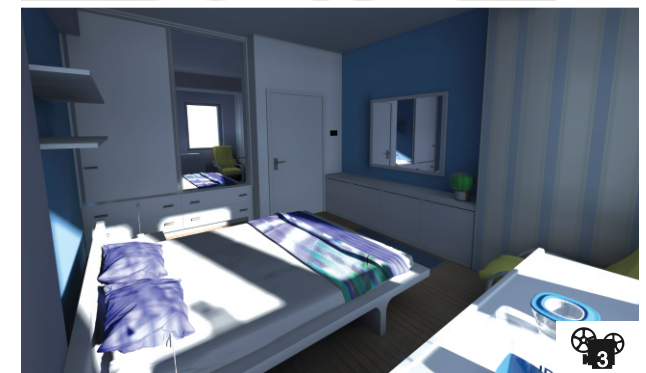
ЗД ВИЗУЕЛИЗАЦИЈА
3D VISUALIZATION



СТАН / UNIT= 51.86m²
 Балкон / Balcony= 3.99m²
 Влезен хол / Entrance hall= 6.65m²
 Кујна / Kitchen= 4.96m²
 Остава / Closet= 1.92m²
 Дн.соба / Living room= 20.90m²
 Сп.соба / Bedroom= 13.04m²
 Бања / Bathroom= 4.38m²



основа на карактеристичен кат
typical floor layout

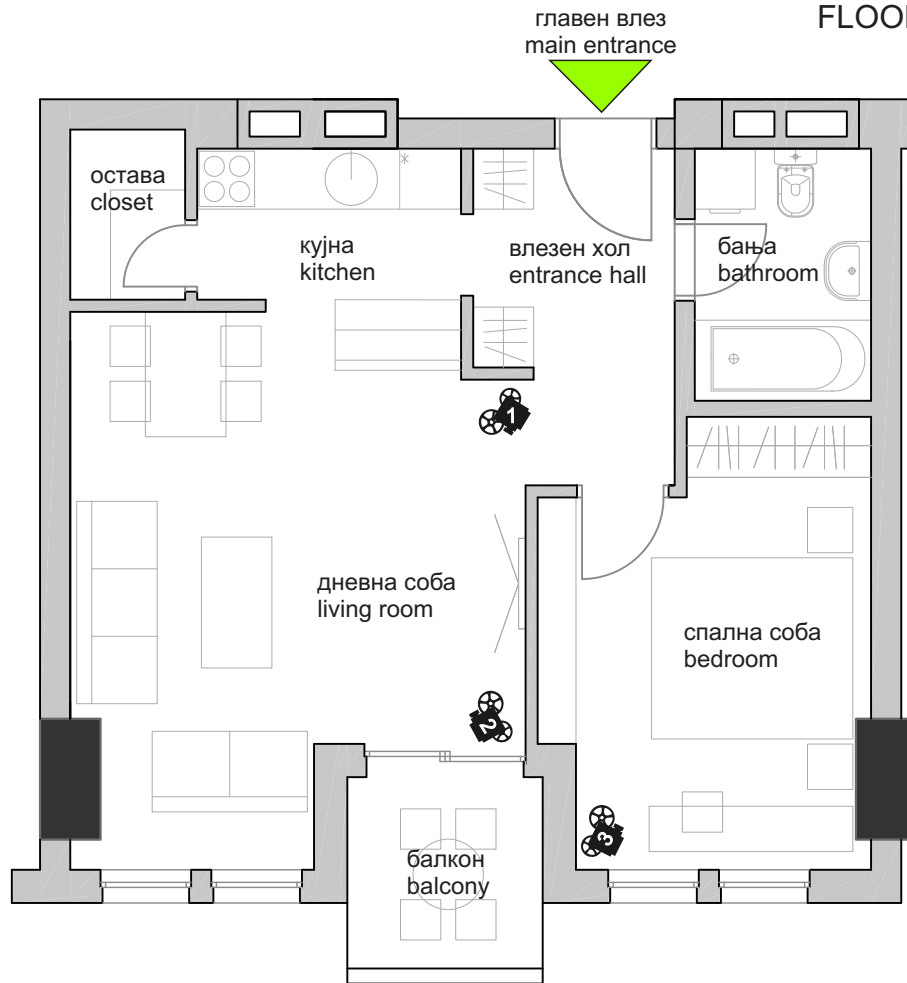


SKOPJE CITY TOWER ГРУПНО ДОМУВАЊЕ / RESIDENTIAL UNITS

СТАН 3 / UNIT 3
Кат 1 / Floor 1

ОСНОВА
FLOOR LAYOUT

ЗД ВИЗУЕЛИЗАЦИЈА
3D VISUALIZATION



СТАН / UNIT= 51.86m²
Балкон / Balcony= 3.99m²
Влезен хол / Entrance hall= 6.65m²
Кујна / Kitchen= 4.96m²
Остава / Closet= 1.92m²
Дн.соба / Living room= 20.90m²
Сп.соба / Bedroom= 13.04m²
Бања / Bathroom= 4.38m²



основа на карактеристичен кат
typical floor layout

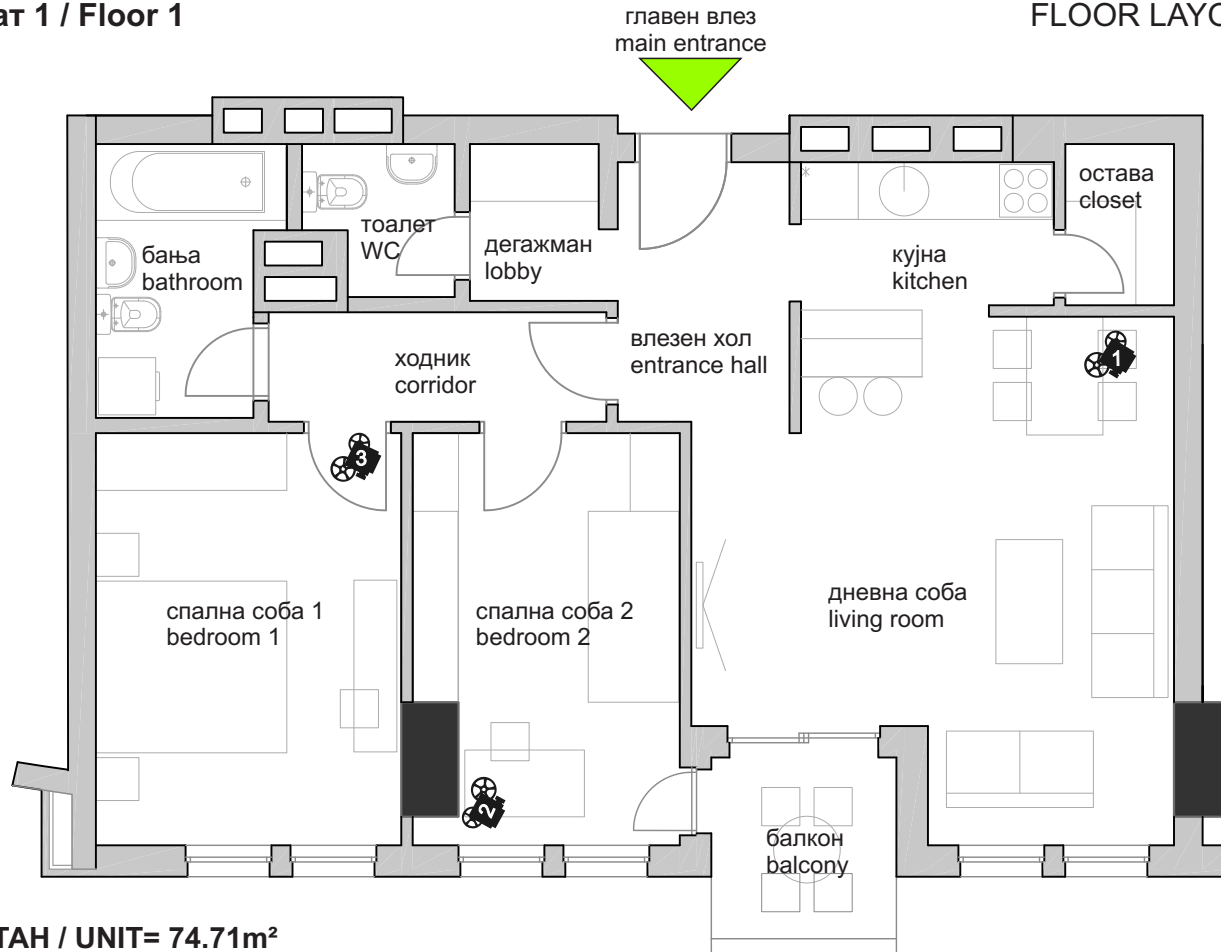


SKOPJE CITY TOWER ГРУПНО ДОМУВАЊЕ / RESIDENTIAL UNITS

СТАН 4 / UNIT 4
Кат 1 / Floor 1

ОСНОВА
FLOOR LAYOUT

3Д ВИЗУЕЛИЗАЦИЈА
3D VISUALIZATION



СТАН / UNIT= 74.71m²

Балкон / Balcony= 4.09m²

Влезен хол / Entrance hall= 5.35m²

Кујна / Kitchen= 5.03m²

Остава / Closet= 1.92m²

Дн.соба / Living room= 22.90m²

Сп.соба 1 / Bedroom 1= 13.82m²

Сп.соба 2 / Bedroom 2= 11.60m²

Бања / Bathroom= 5.05m²

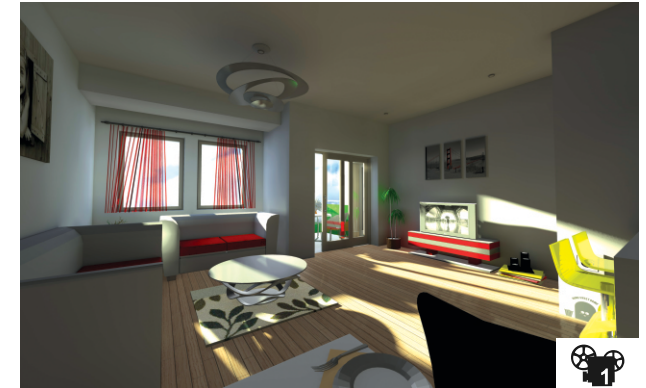
Тоалет / WC= 2.22m²

Ходник / Corridor= 4.36m²

Дегажман / Lobby= 2.46m²



основа на карактеристичен кат
typical floor layout

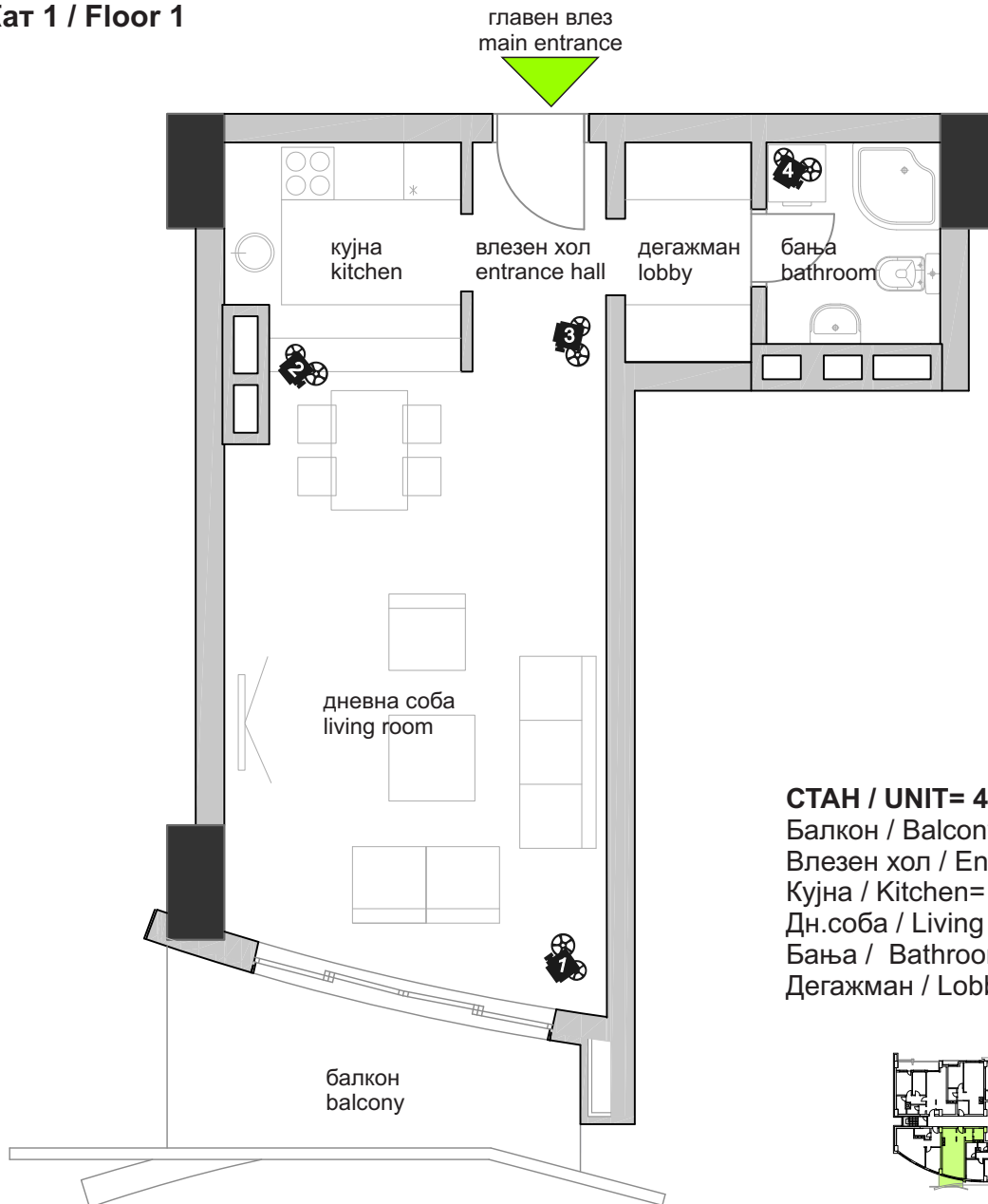


SKOPJE CITY TOWER ГРУПНО ДОМУВАЊЕ / RESIDENTIAL UNITS

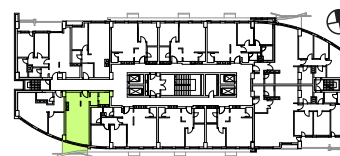
СТАН 5 / UNIT 5
Кат 1 / Floor 1

ОСНОВА
FLOOR LAYOUT

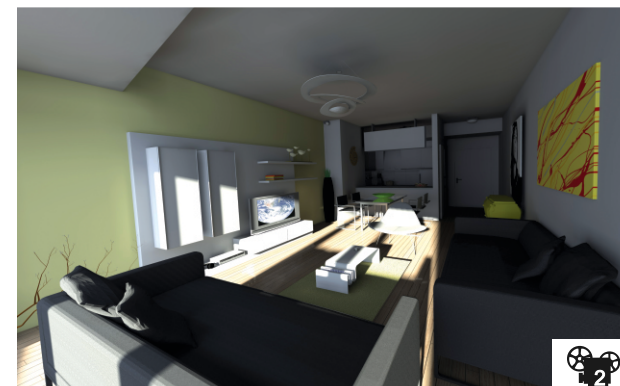
ЗД ВИЗУЕЛИЗАЦИЈА
3D VISUALIZATION



СТАН / UNIT= 41.58m²
Балкон / Balcony= 6.75m²
Влезен хол / Entrance hall= 3.63m²
Кујна / Kitchen= 5.7m²
Дн.соба / Living room= 25.10m²
Бања / Bathroom= 3.84m²
Дегажман / Lobby= 3.31m²



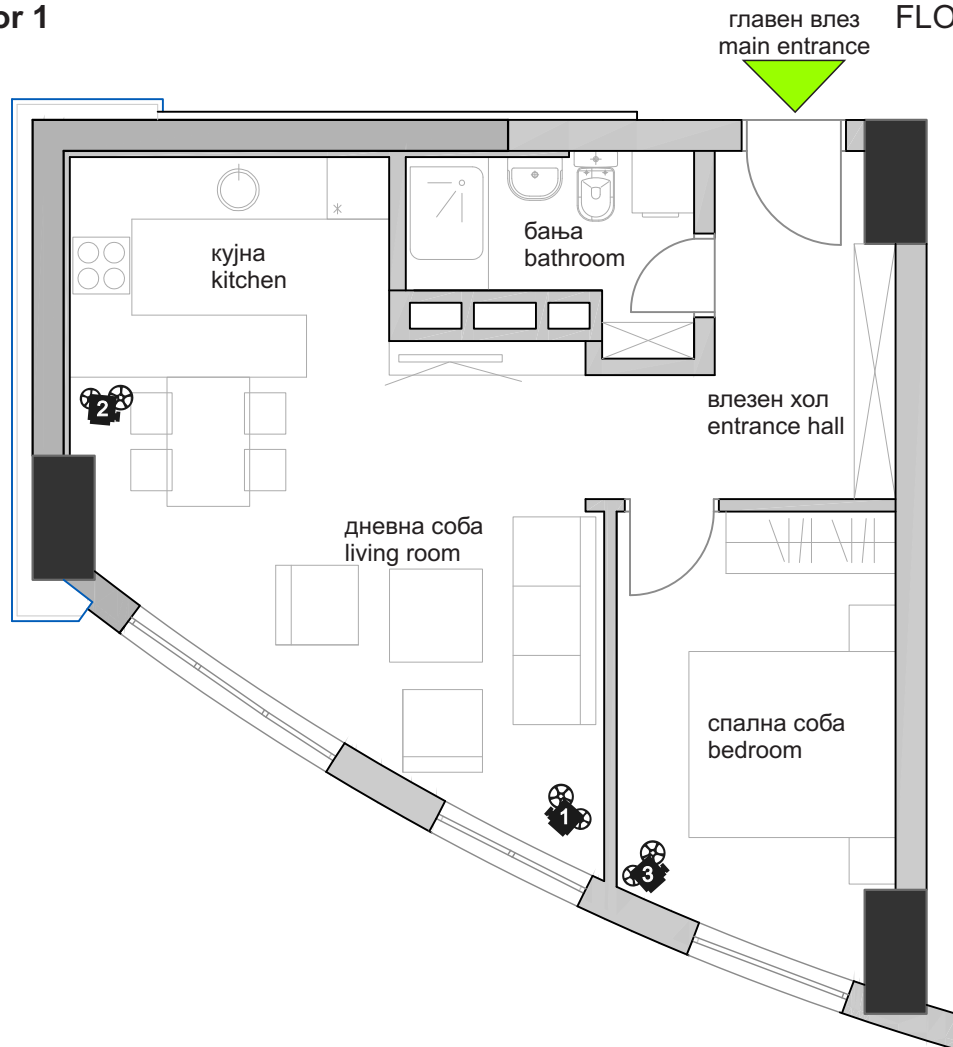
основа на карактеристичен кат
typical floor layout



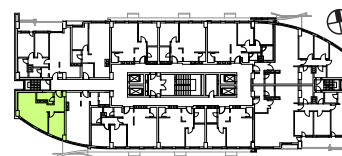
SKOPJE CITY TOWER ГРУПНО ДОМУВАЊЕ / RESIDENTIAL UNITS

СТАН 6 / UNIT 6
Кат 1 / Floor 1

ОСНОВА
FLOOR LAYOUT

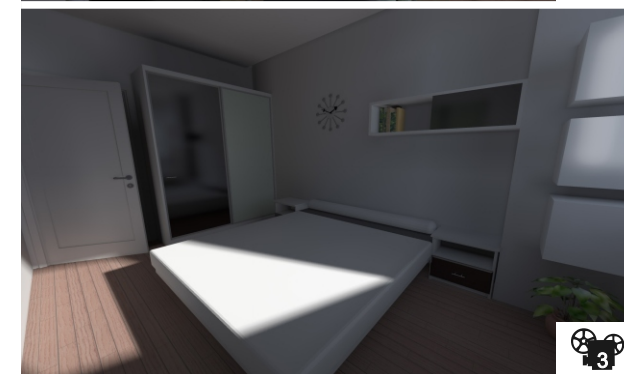


СТАН / UNIT= 47.34m²
Влезен хол / Entrance hall= 7.64m²
Кујна / Kitchen= 6.3m²
Дн.соба / Living room= 18.14m²
Бања / Bathroom= 4.26m²
Спална соба / Bedroom= 11m²



основа на карактеристичен кат
typical floor layout

ЗД ВИЗУЕЛИЗАЦИЈА
3D VISUALIZATION

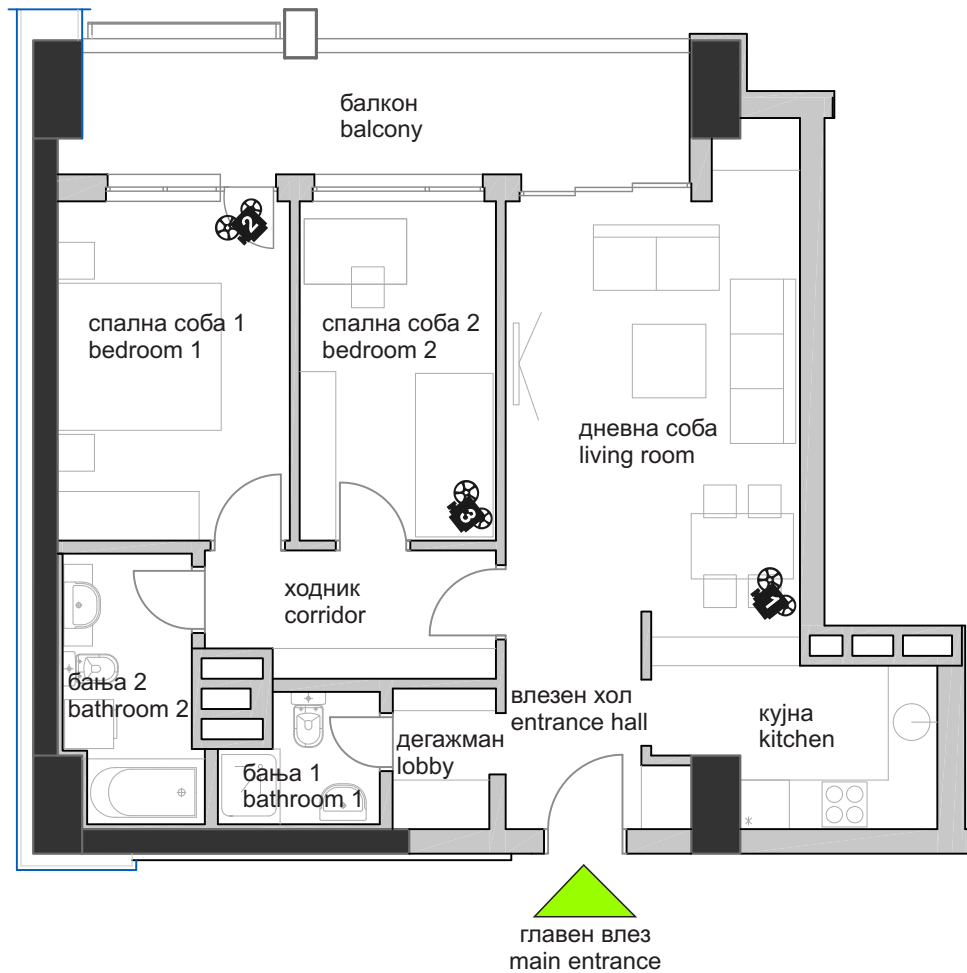


SKOPJE CITY TOWER ГРУПНО ДОМУВАЊЕ/ RESIDENTIAL UNITS

СТАН 7 / UNIT 7
Кат 1 / Floor 1

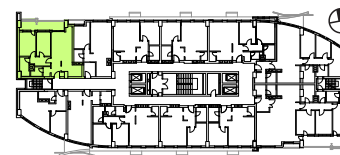
ОСНОВА
FLOOR LAYOUT

ЗД ВИЗУЕЛИЗАЦИЈА
3D VISUALIZATION

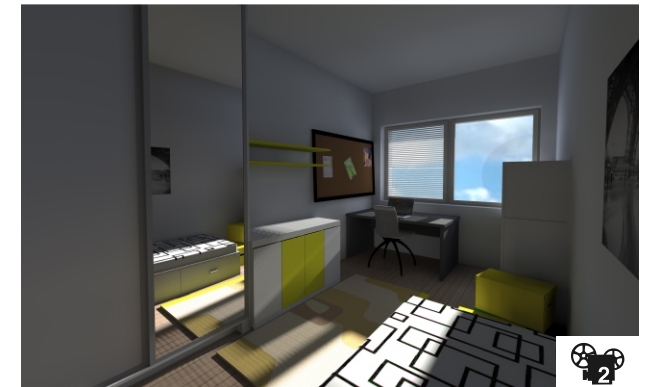


СТАН / UNIT= 68.99m²
 Балкон / Balcony= 11.50m²
 Влезен хол / Entrance hall= 4.82m²
 Дегажман / Lobby= 2.11m²
 Ходник / Corridor= 5.59m²
 Кујна / Kitchen= 6.65m²
 Дн.соба / Living room= 20.16m²
 Сп.соба 1 / Bedroom 1= 11.87m²

Сп. соба 2 / Bedroom 2= 9.93m²
 Бања 1 / Bathroom 1= 2.73m²
 Бања 2 / Bathroom 2= 5.10m²



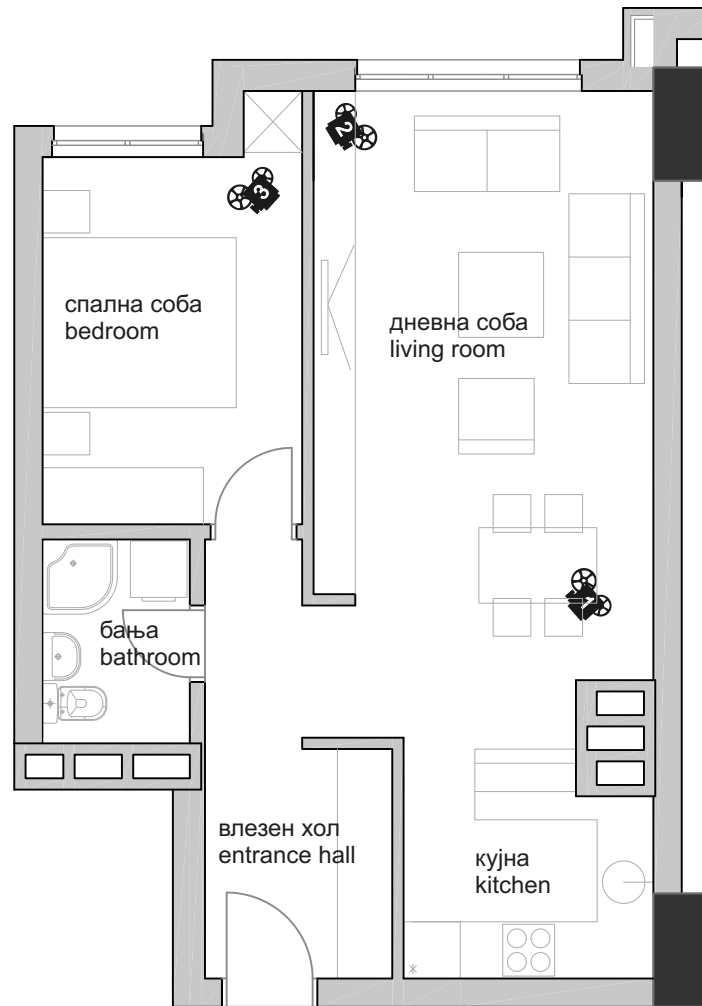
основа на карактеристичен кат
typical floor layout



SKOPJE CITY TOWER ГРУПНО ДОМУВАЊЕ / RESIDENTIAL UNITS

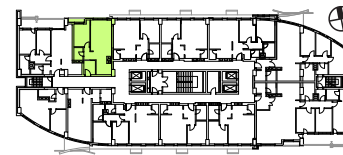
СТАН 8 / UNIT 8
Кат 1 / Floor 1

ОСНОВА
FLOOR LAYOUT



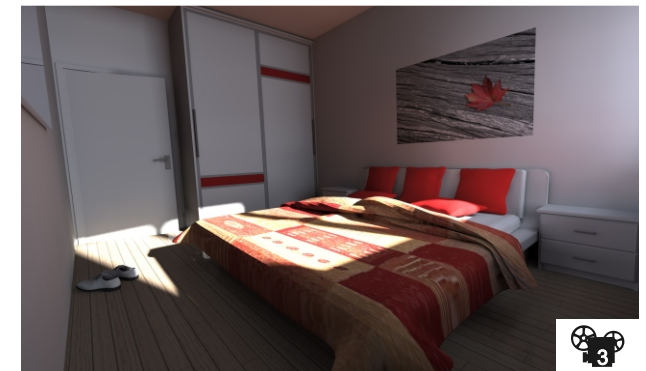
СТАН / UNIT= 52.63m²
Влезен хол / Entrance hall= 7.62m²
Кујна / Kitchen= 6.02m²
Дн.соба / Living room= 24.49m²
Сп.соба / Bedroom= 11.13m²
Бања / Bathroom= 3.37m²

главен влез
main entrance



основа на карактеристичен кат
typical floor layout

ЗД ВИЗУЕЛИЗАЦИЈА
3D VISUALIZATION

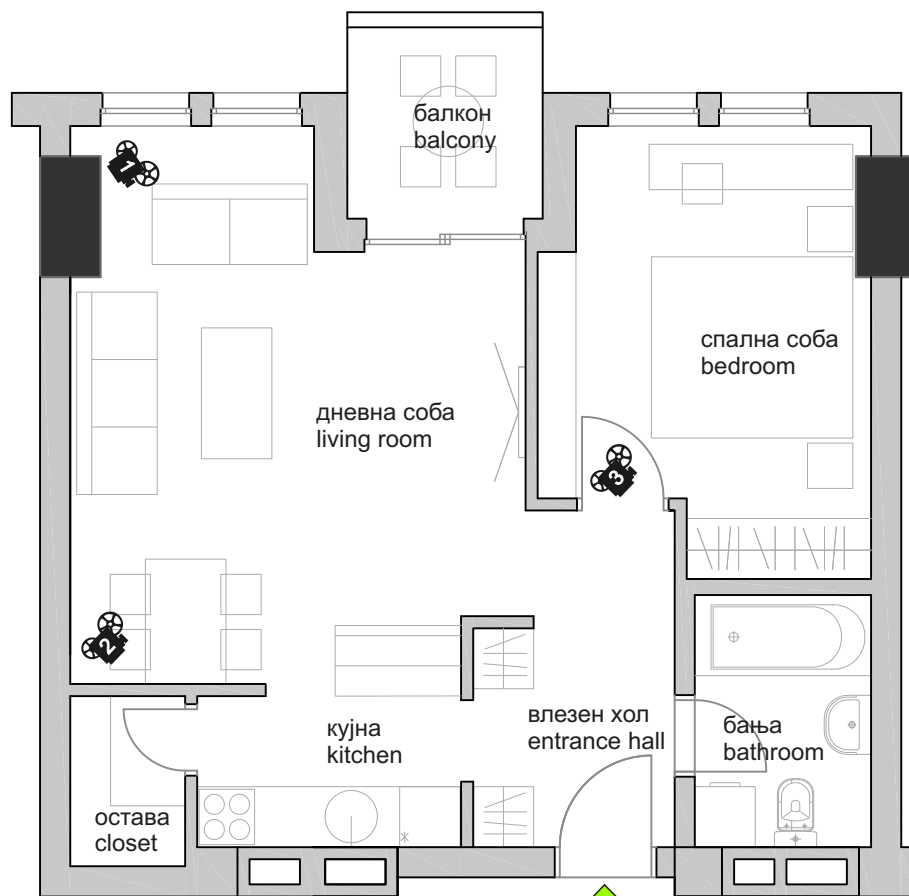


SKOPJE CITY TOWER ГРУПНО ДОМУВАЊЕ / RESIDENTIAL UNITS

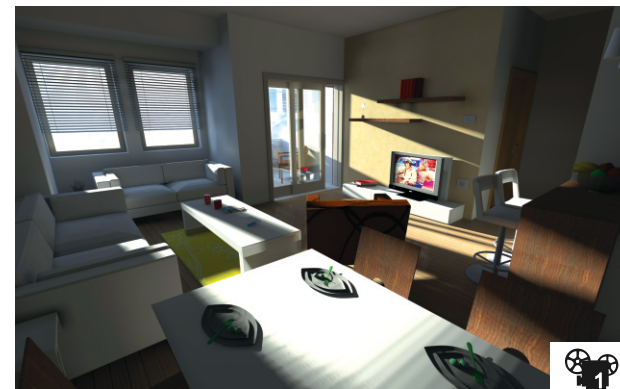
СТАН 9 / UNIT 9
Кат 1 / Floor 1

ОСНОВА
FLOOR LAYOUT

ЗД ВИЗУЕЛИЗАЦИЈА
3D VISUALIZATION



СТАН / UNIT= 51.86m²
Балкон / Balcony= 3.99m²
Влезен хол / Entrance hall= 6.65m²
Кујна / Kitchen= 4.96m²
Остава / Closet= 1.92m²
Дн.соба / Living room= 20.90m²
Сп.соба / Bedroom= 13.04m²
Бања / Bathroom= 4.38m²

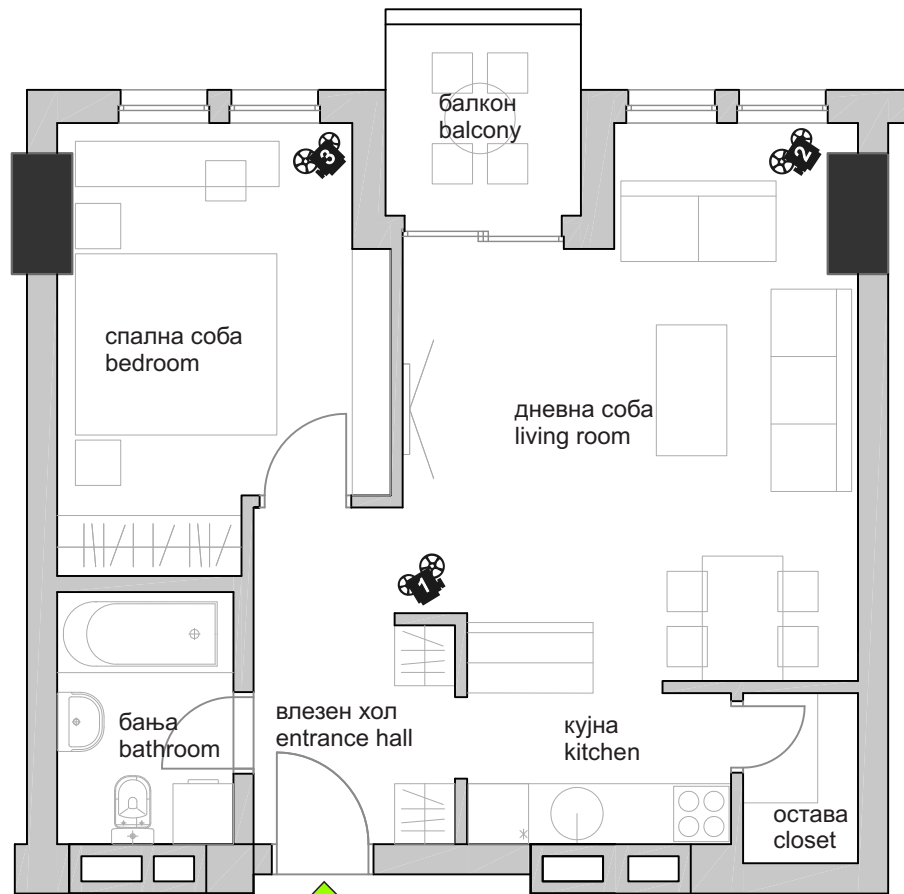


SKOPJE CITY TOWER ГРУПНО ДОМУВАЊЕ / RESIDENTIAL UNITS

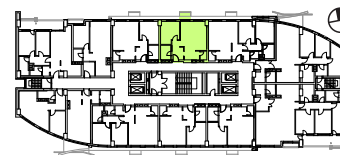
СТАН 10 / UNIT 10
Кат 1 / Floor 1

ОСНОВА
FLOOR LAYOUT

ЗД ВИЗУЕЛИЗАЦИЈА
3D VISUALIZATION



СТАН / UNIT= 51.86m²
Балкон / Balcony= 3.99m²
Влезен хол / Entrance hall= 6.65m²
Кујна / Kitchen= 4.96m²
Остава / Closet= 1.92m²
Дн.соба / Living room= 20.90m²
Сп.соба / Bedroom= 13.04m²
Бања / Bathroom= 4.38m²



основа на карактеристичен кат
typical floor layout

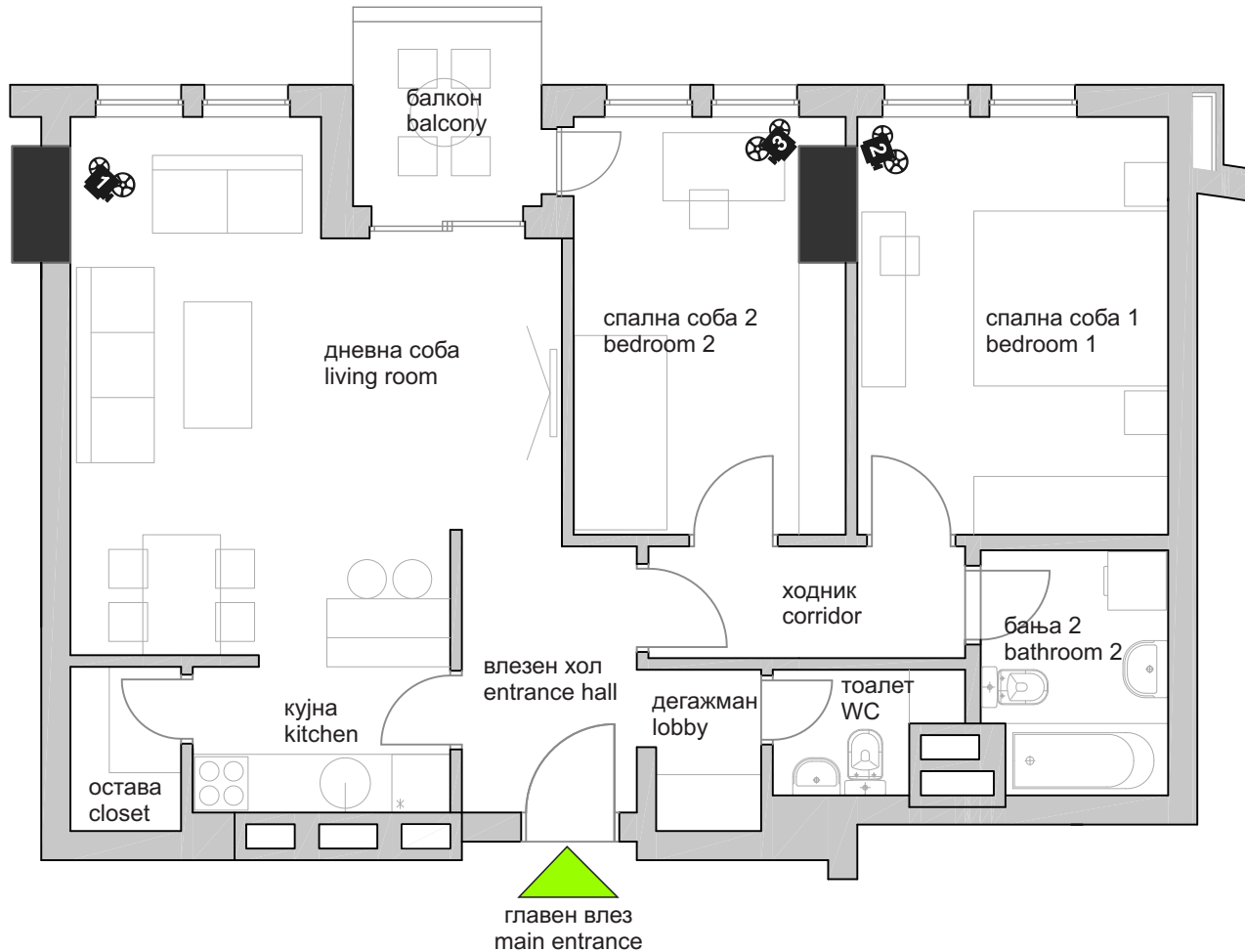


SKOPJE CITY TOWER ГРУПНО ДОМУВАЊЕ / RESIDENTIAL UNITS

СТАН 11 / UNIT 11
Кат 1 / Floor 1

ОСНОВА
FLOOR LAYOUT

ЗД ВИЗУЕЛИЗАЦИЈА
3D VISUALIZATION

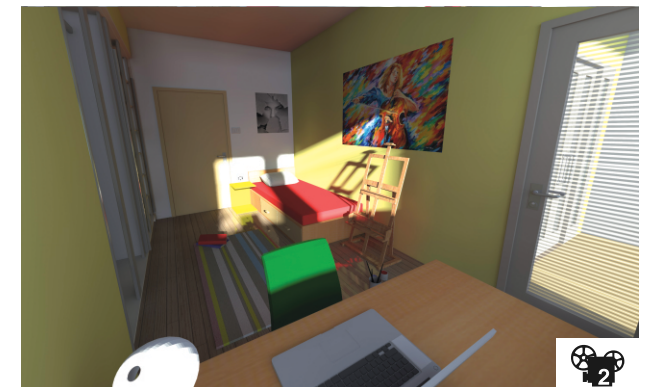


СТАН / UNIT= 73.41m²
Балкон / Balcony= 4.09m²
Влезен хол/ Entrance hall= 5.38m²
Кујна / Kitchen= 4.97m²
Остава / Closet= 1.92m²
Дн.соба / Living room= 22.94m²
Сп.соба 1 / Bedroom 1= 13.76m²

Сп.соба 2 / Bedroom 2= 11.55m²
Бања / Bathroom= 4.68m²
Тоалет / WC= 2.13m²
Ходник / Corridor= 4.06m²
Дегажман / Lobby= 2.02m²



основа на карактеристичен кат
typical floor layout

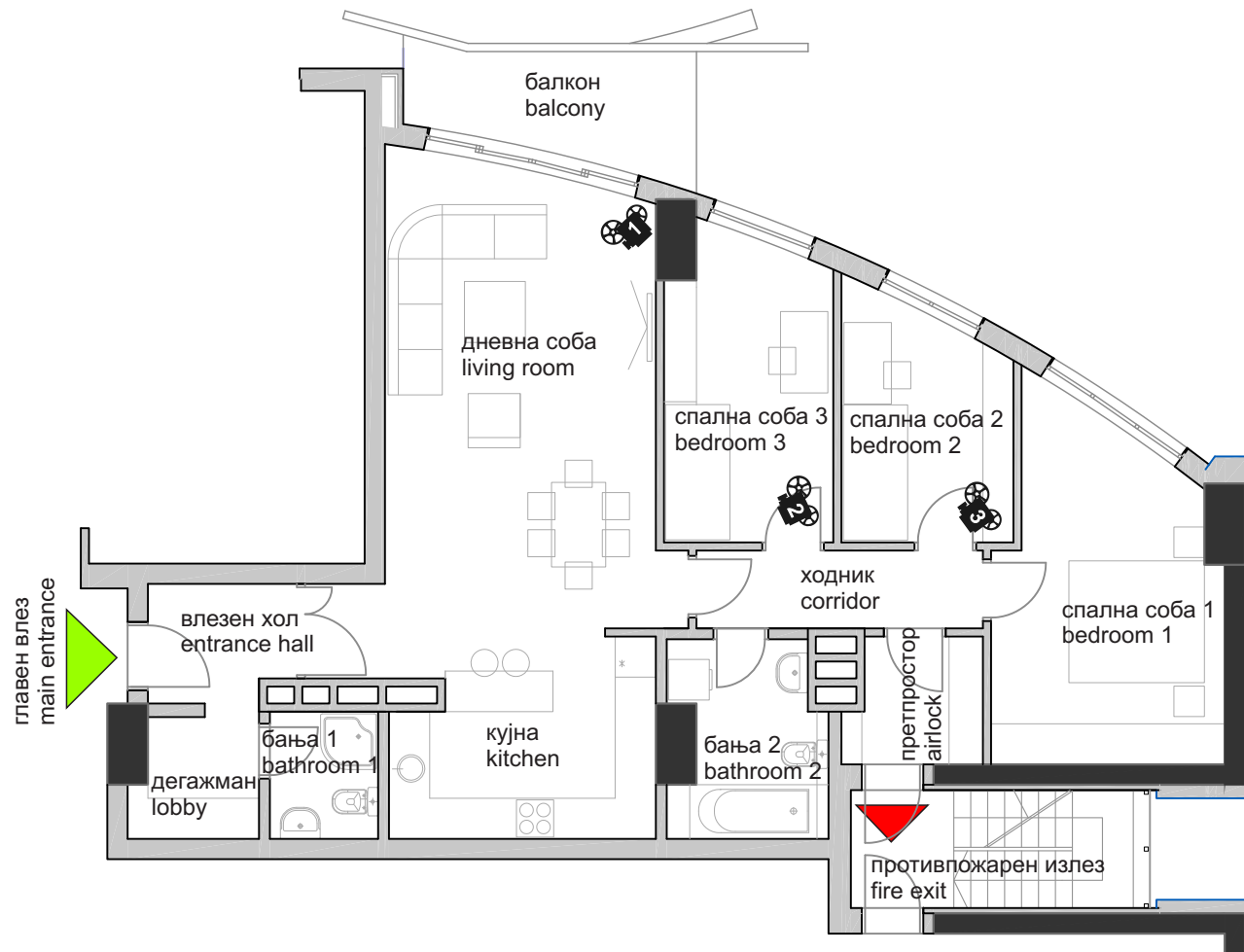


SKOPJE CITY TOWER ГРУПНО ДОМУВАЊЕ / RESIDENTIAL UNITS

СТАН 12 / UNIT 12
Кат 1 / Floor 1

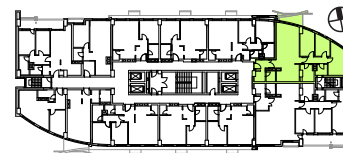
ОСНОВА
FLOOR LAYOUT

ЗД ВИЗУЕЛИЗАЦИЈА
3D VISUALIZATION

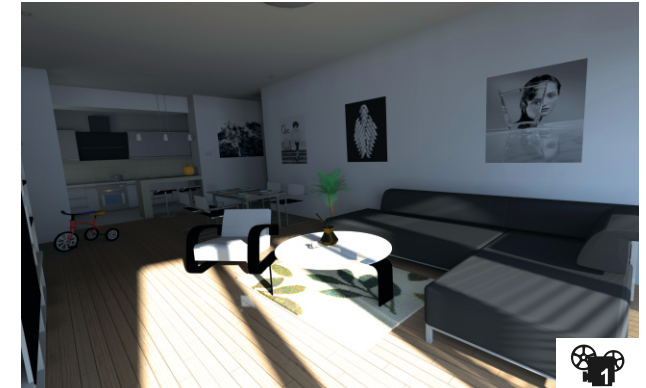


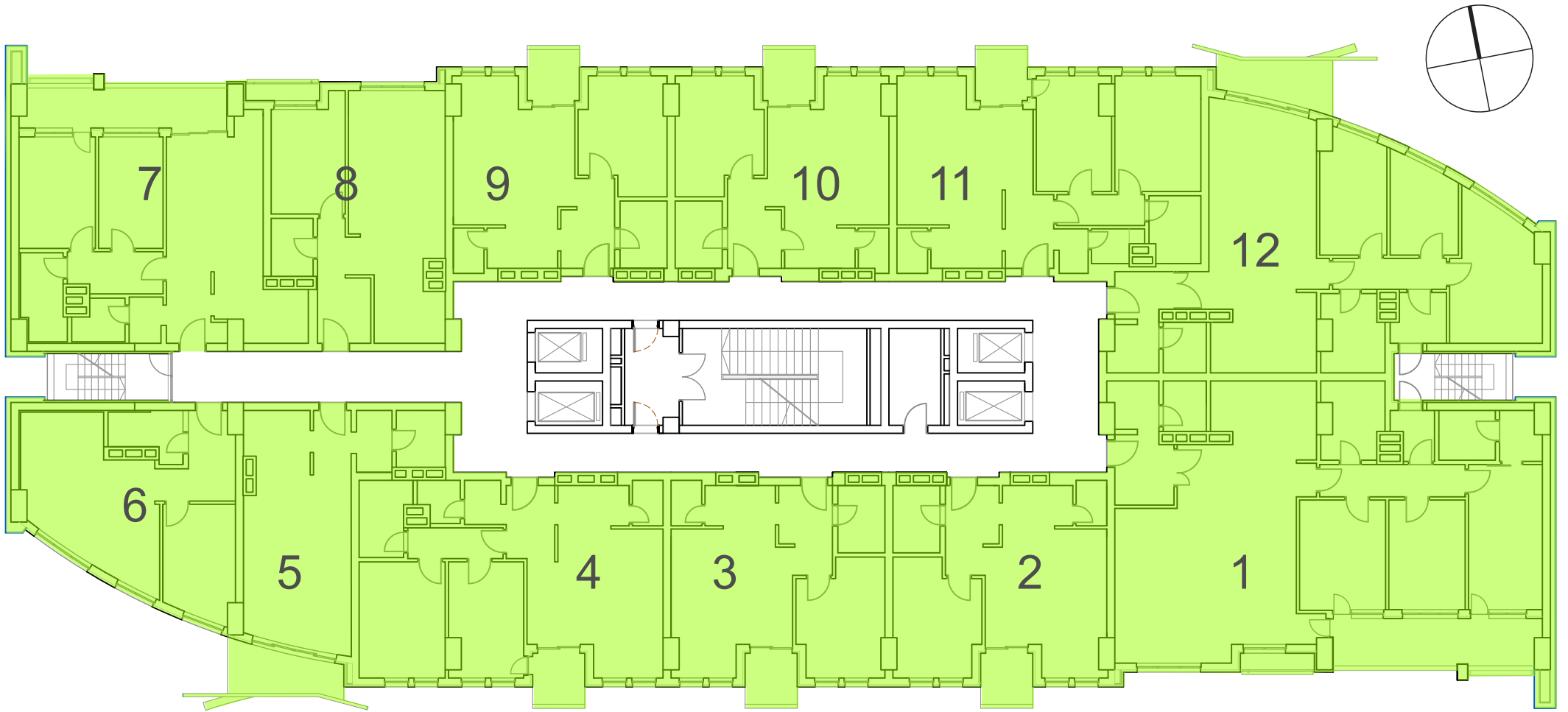
СТАН / UNIT= 101.95m²
 Балкон / Balcony= 6.70m²
 Влезен хол / Entrance hall= 3.95m²
 Дегажман / Lobby= 3.46m²
 Ходник / Corridor= 5.36m²
 Кујна / Kitchen= 9.65m²
 Дн.соба / Living room= 31.50m²
 Сп.соба / Bedroom= 15.87m²

Сп. соба 2 / Bedroom 2= 8.54m²
 Сп. соба 3 / Bedroom 3= 10.81m²
 Бања 1 / Bathroom 1= 3.00m²
 Бања 2 / Bathroom 2= 6.24m²
 Претпростор / Airlock= 3.57m²



основа на карактеристичен кат
typical floor layout





TYPICAL FLOOR LAYOUT